

CONSTRUCTION PLANS FOR

DATE	ISSUE	BY
***	///	---



CITY OF FRUITLAND PARK PROPOSED METAL BUILDING

SECTION 33, TOWNSHIP 18S., RANGE 24E.

CHRIS CHESHIRE
MAYOR
DISTRICT 3

PATRICK DEGRAVE
CITY COMMISSIONER
DISTRICT 1

JOHN GUNTER
VICE MAYOR
DISTRICT 4

GARY LA VENIA
CITY MANAGER

ROBB DICUS
PUBLIC WORKS
DIRECTOR

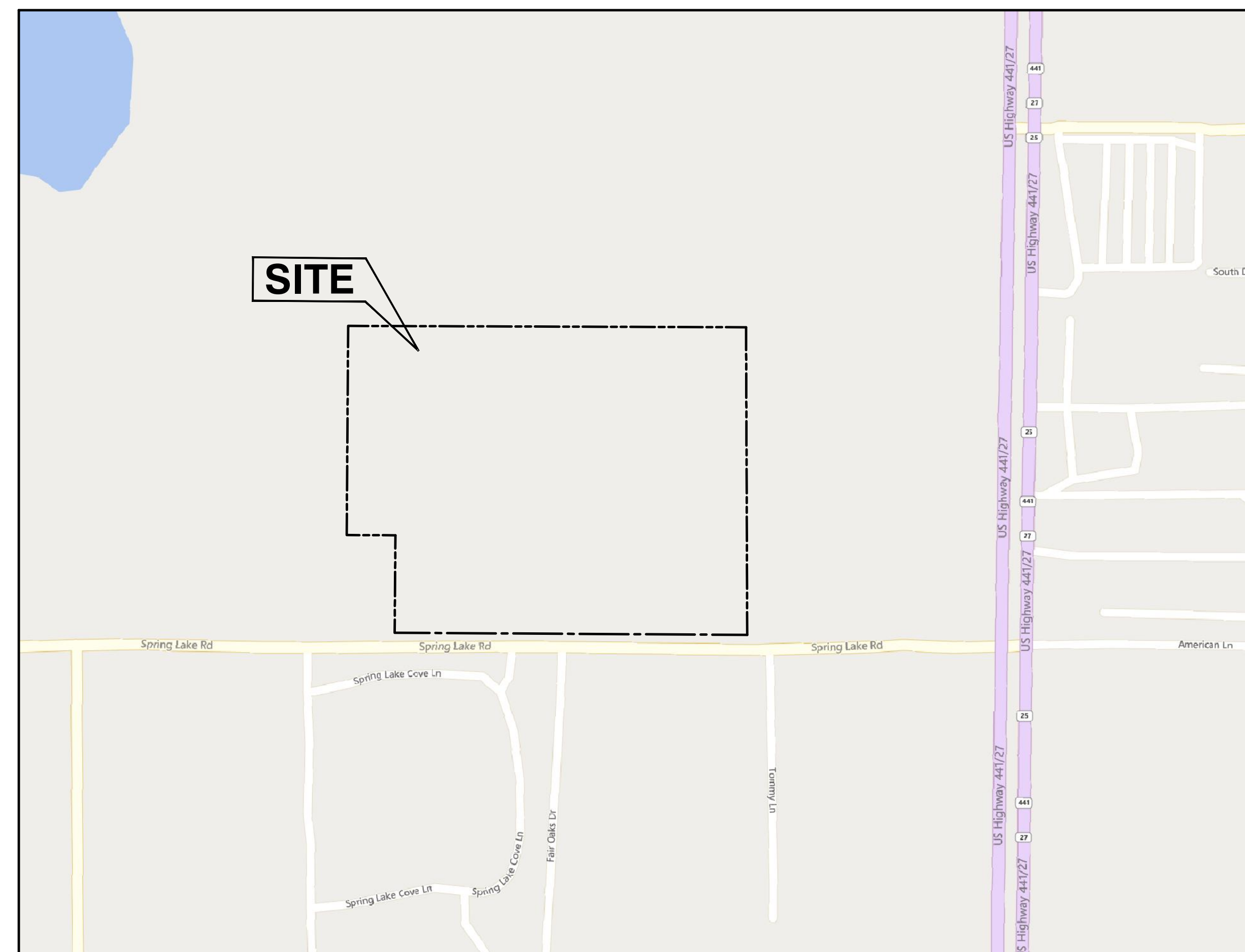
JOHN MOBILIAN
CITY COMMISSIONER
DISTRICT 2

CHRIS BELL
CITY COMMISSIONER
DISTRICT 5

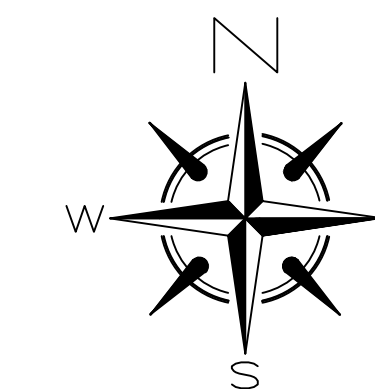
ANITA GERACI-CARVER
CITY ATTORNEY

OWNER/DEVELOPER:
CITY OF FRUITLAND PARK
202 WEST BERCKMAN STREET
FRUITLAND PARK, FL 34731
ROBB DICUS, DIRECTOR OF PUBLIC WORKS
PHONE: (352) 360-6795
EMAIL ADDRESS

ENGINEER/SURVEYOR:
HALFF ASSOCIATES
902 SINCLAIR AVENUE
TAVARES, FL. 32778
BRETT TOBIAS, P.E.
(352) 557-9225
BTOBIAS@HALFF.COM



VICINITY MAP
1" = 250'



INDEX OF SHEETS

1	COVER SHEET
2	AERIAL PLAN
3	DEMOLITION AND EROSION CONTROL PLAN
4	SITE AND GEOMETRY PLAN
5	DRAINAGE & GRADING PLAN
6	UTILITY PLAN
7	DETAILS
8	DETAILS

DATE

CONTRACTOR SHALL CALL
SUNSHINE STATE ONE CALL OF FLORIDA, INC.
AT LEAST 48 HOURS PRIOR TO EXCAVATION
1-800-432-4770

HALFF[®]

902 North Sinclair Ave. Office: 352.343.8481
Tavares, Florida 32778 Fax: 352.343.8495
Certificate of Authorization Number: 33380

ORIGINAL DOCUMENT SIZE 24"x36"

(INCHES)



Scale: 1" = 60'
 0 60 120
 SCALE IN FEET

**CITY OF FRUITLAND PARK
 METAL BUILDING
 AERIAL PLAN**

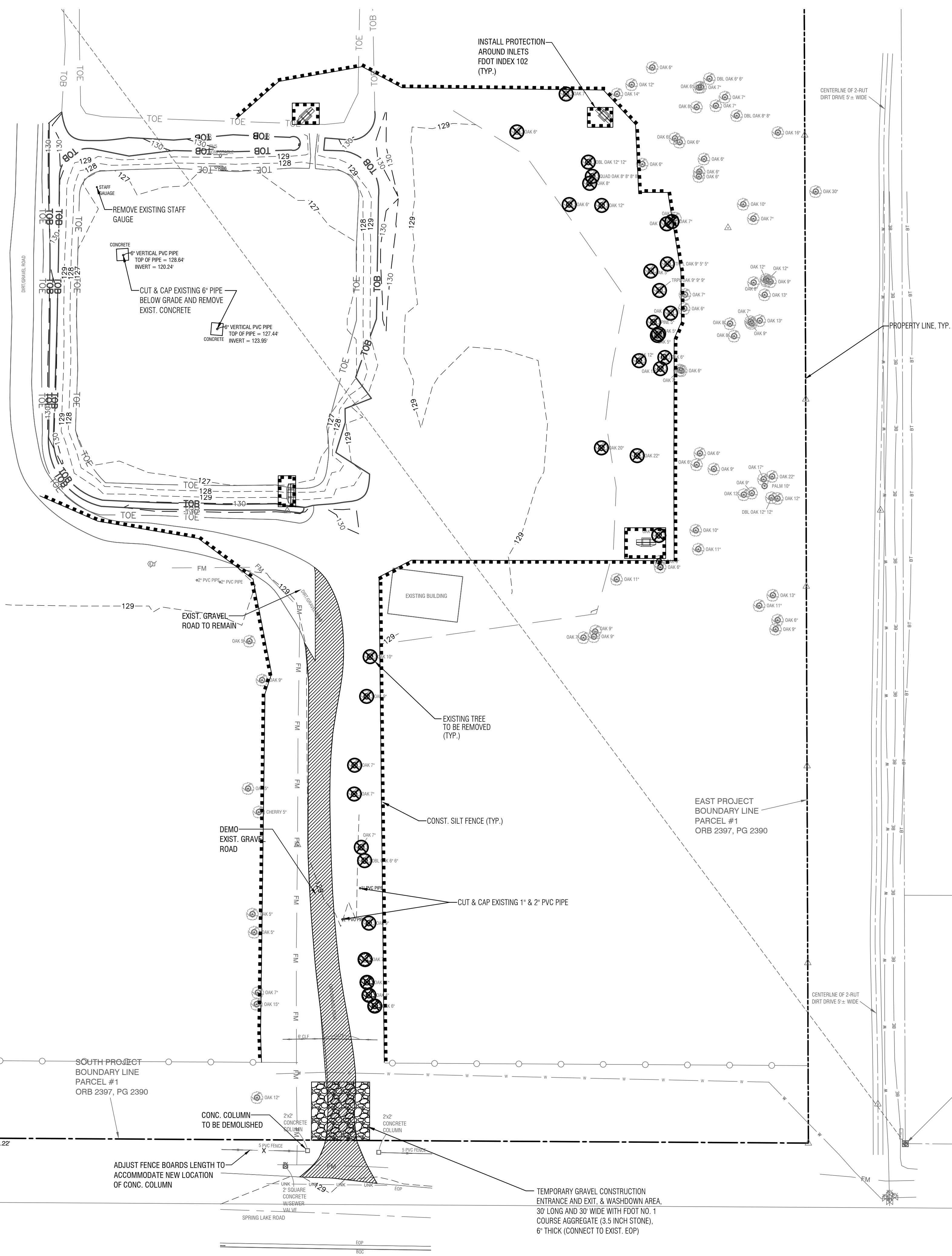
902 North Sinclair Ave.
 Tavares, Florida 32778
 Office: 352.343.8481
 Fax: 352.343.8495
 Certificate of Authorization Number: 33380

DATE:	SEPTEMBER 2021
DESIGNED BY:	BJT
DRAWN BY:	JMW
CHECKED BY:	BJT
JOB NO.:	081040.0083
FILE NAME:	081040.0083_CDP_MetalBuilding_Aerial.dwg
Sheet 02	

BRETT J. TOBIAS, PE
 Registered Eng 69017

DATE	REVISION
	1
	2
	3
	4
	5
	6
	7
	8

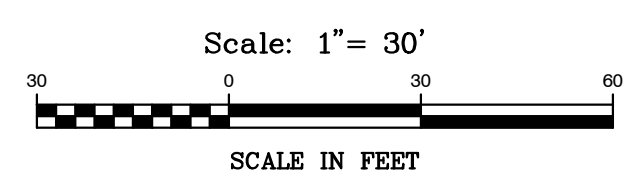
- = MAGNOLIA TREE
- = SHRUB
- = PINE TREE
- = POWER POLE
- = PALM TREE
- = CATCH BASIN
- = HOLLY TREE
- = CONCRETE MITERED END SECTION
- = CABLE TELEVISION RISER
- = CEDAR TREE



LEGEND

EXISTING TREE TO BE REMOVED

SILT FENCE



EROSION AND SEDIMENT CONTROL NOTES:

THE FOLLOWING LIST REPRESENTS A BASIC EROSION AND SEDIMENT CONTROL PROGRAM WHICH IS TO BE IMPLEMENTED TO HELP PREVENT OFF-SITE SEDIMENTATION DURING AND AFTER CONSTRUCTION OF THE PROJECT.

- EROSION AND SEDIMENT CONTROL**
- A. EROSION CONTROL DURING CONSTRUCTION:**
- TEMPORARY EROSION CONTROL STRUCTURES SHALL BE UTILIZED DURING CONSTRUCTION AT AREAS ON-SITE WHERE UNSTABILIZED GRADES MAY CAUSE EROSION PROBLEMS. EROSION CONTROL STRUCTURES MAY BE REMOVED AFTER UPSLOPE AREA HAS BEEN STABILIZED BY SOD OR COMPACTED AS DETERMINED BY THE CONTRACTOR.
 - TEMPORARY EROSION AND SEDIMENT CONTROL MEASURES SHALL BE COORDINATED WITH PERMANENT MEASURES TO ASSURE ECONOMICAL, EFFECTIVE AND CONTINUOUS CONTROL THROUGHOUT THE CONSTRUCTION PHASE. TEMPORARY MEASURES SHALL NOT BE CONSTRUCTED FOR EXPEDIENCY IN LIEU OF PERMANENT MEASURES.
 - PERMANENT EROSION AND SEDIMENT CONTROL MEASURES SHALL BE INSTALLED AT THE EARLIEST PREDICTABLE TIME CONSISTENT WITH GOOD CONSTRUCTION PRACTICES. ONE OF THE FIRST CONSTRUCTION ACTIVITIES SHOULD BE THE PLACEMENT OF PERMANENT AND TEMPORARY EROSION AND SEDIMENT CONTROL MEASURES AROUND THE PERIMETER OF THE PROJECT OR THE INITIAL WORK AREA TO PROTECT THE PROJECT, ADJACENT PROPERTIES AND WATER RESOURCES.
 - STORM WATER MANAGEMENT AREAS, STORM SEWER SYSTEM AND CONTROL STRUCTURES SHALL BE EXCAVATED TO ROUGH GRADE PRIOR TO BUILDING CONSTRUCTION OR PLACEMENT OF IMPERVIOUS SURFACES WITHIN THE AREA TO BE SERVED BY THOSE FACILITIES. TO PREVENT REDUCTION IN STORAGE VOLUME AND PERCOLATION RATE, ALL ACCUMULATED SEDIMENT WILL BE REMOVED FROM THE STORM WATER FACILITIES PRIOR TO FINAL GRADING, STABILIZATION AND GRASSING.
 - EROSION CONTROL STRUCTURES, SUCH AS SILT FENCE AND BERMS, SHALL BE INSTALLED AROUND INLETS AND IN SWALES TO TRAP ERODED MATERIAL, PREVENT SEDIMENTATION IN DOWN STREAM AREAS AND KEEP RUNOFF VELOCITIES LOW.
 - THE CONTRACTOR SHALL MINIMIZE THE EXTENT OF AREA EXPOSED AT ANY ONE TIME AND THE DURATION OF EXPOSURE.
 - STABILIZATION MEASURES SHALL BE INITIATED FOR EROSION AND SEDIMENT CONTROL ON DISTURBED AREAS NO MORE THAN FOURTEEN (14) DAYS AFTER THE CONSTRUCTION ACTIVITY IN ANY PORTION OF THE SITE THAT HAS CEASED.
 - THE CONTRACTOR WILL INSTALL A PERMANENT VEGETATIVE COVER FOR EROSION AND SEDIMENT CONTROL ON ALL LAND SURFACES DISTURBED BY CONSTRUCTION. THIS PROTECTIVE COVER MUST BE INSTALLED WITHIN FOURTEEN (14) DAYS AFTER FINAL GRADING OF THE EFFECTED LAND SURFACES. A PERMANENT VEGETATIVE COVER MUST BE ESTABLISHED WITHIN SIXTY (60) DAYS AFTER PLANTING OR INSTALLATION.
 - EROSION AND SEDIMENT CONTROL MEASURES SHALL BE ADEQUATELY MAINTAINED TO PERFORM THEIR INTENDED FUNCTION DURING CONSTRUCTION OF THE PROJECT. SEDIMENT DEPOSITS SHOULD BE REMOVED AFTER EACH RAINFALL. THEY MUST BE REMOVED WHEN THE LEVEL OF DEPOSITION REACHES APPROXIMATELY ONE-HALF THE HEIGHT OF THE BARRIER.
 - PLACEMENT OF BARRIERS OR NECESSARY REPAIRS TO BARRIERS SHALL BE ACCOMPLISHED PROMPTLY.
 - MATERIAL FROM SEDIMENT TRAPS SHALL NOT BE STOCK PILED OR DISPOSED OF IN A MANNER WHICH MAKES THEM READILY SUSCEPTIBLE TO BEING WASHED INTO ANY WATER COURSE BY RUNOFF OR HIGH WATER.
 - ANY ACCUMULATED SEDIMENT DEPOSITS REMAINING IN PLACE AFTER THE BARRIERS ARE NO LONGER REQUIRED SHALL BE DRESSED TO CONFORM TO THE EXISTING GRADE, PREPARED, AND SEEDED.
 - TO PROVIDE DUST CONTROL, A CONTRACTOR SHALL PROVIDE A WATER TRUCK OR IRRIGATION SYSTEM AS NEEDED, TO MAINTAIN SOIL MOISTURE.
 - IF SITE SPECIFIC CONDITIONS REQUIRE ADDITIONAL MEASURES DURING ANY PHASE OF CONSTRUCTION OR OPERATION TO PREVENT EROSION OR CONTROL SEDIMENT, BEYOND THOSE SPECIFIED IN THE EROSION AND SEDIMENT CONTROL PLAN, THE CONTRACTOR MUST IMPLEMENT ADDITIONAL BEST MANAGEMENT PRACTICES AS NECESSARY, IN ACCORDANCE WITH THE SPECIFICATION IN SECTION 6 OF THE FLORIDA LAND DEVELOPMENT MANUAL: A GUIDE TO LAND AND WATER MANAGEMENT (FLORIDA DEPARTMENT OF ENVIRONMENTAL REGULATION, 1986).

B. PERMANENT STABILIZATION

WHERE CONSTRUCTION IS COMPLETE, PERMANENT VEGETATION SHALL BE INSTALLED AS SPECIFIED ON THE CONSTRUCTION PLANS AND IN ACCORDANCE WITH THE CONSTRUCTION SPECIFICATION DOCUMENTS. PERMANENT VEGETATION WILL INCLUDE SOD OR SEED AND MULCH.

STORMWATER MANAGEMENT SYSTEM

THE STORMWATER RETENTION PONDS SHALL BE EXCAVATED TO ROUGH GRADE PRIOR TO BUILDING CONSTRUCTION OR PLACEMENT OF IMPERVIOUS SURFACES WITHIN THE DRAINAGE AREA SERVED BY THIS FACILITY. ALL ACCUMULATED SEDIMENT MUST BE REMOVED FROM THE RETENTION POND PRIOR TO FINAL GRADING, STABILIZING AND GRASSING.

OTHER CONTROLS

A. OFFSITE VEHICLE TRACKING

PAVED STREETS ADJACENT TO THE CONSTRUCTION SITE ENTRANCE WILL BE SWEEP AS NEEDED TO PREVENT EXCESS MUD, DIRT OR ROCK FROM LEAVING THE CONSTRUCTION SITE. ALL DUMP TRUCKS HAULING MATERIAL TO AND FROM THE CONSTRUCTION SITE WILL BE COVERED WITH A TARP. TEMPORARY STABILIZED OR ROCK CONSTRUCTION ENTRANCE MAY BE REQUIRED TO REMOVE EXCESS DIRT AND MUD FROM TIRES BEFORE CONSTRUCTION VEHICLES ENTER ADJACENT PAVED STREETS.

TIMING OF SEDIMENT AND EROSION CONTROL MEASURES:

A SILT FENCE SHALL BE INSTALLED PRIOR TO ANY CONSTRUCTION ACTIVITY. A RETENTION POND AND STORM WATER CONVEYANCE SYSTEM SHALL BE CONSTRUCTED PRIOR TO THE PLACEMENT OF ANY IMPERVIOUS AREA. AREAS WHERE CONSTRUCTION ACTIVITY TEMPORARILY CEASES FOR MORE THAN 14 DAYS SHALL BE STABILIZED WITH TEMPORARY SEED AND MULCH. ONCE CONSTRUCTION ACTIVITY CEASES PERMANENTLY IN ANY AREA, THAT AREA WILL BE STABILIZED WITH PERMANENT SEED AND MULCH OR SOD. AFTER THE ENTIRE SITE IS STABILIZED, THE ACCUMULATED SEDIMENT WITHIN ANY CATCH BASIN, STORM PIPES, OR RETENTION PONDS WILL BE REMOVED.

NOTES

- CONTRACTOR TO DESILT ALL PIPES PRIOR TO COMPLETION OF CONSTRUCTION OF PROJECT.
- SILT FENCE SHOWN IS STRICTLY SCHEMATIC, FOR ILLUSTRATION ONLY, ALL FENCE TO BE WITHIN THE PROPERTY LINE OF THE PROJECT SITE.

NOTE : THE CONTRACTOR SHALL APPLY WITH AND OBTAIN NPDES PERMIT FROM THE FLORIDA DEPT. OF ENVIRONMENTAL PROTECTION (FDEP).

TEMPORARY CONSTRUCTION ENTRANCE

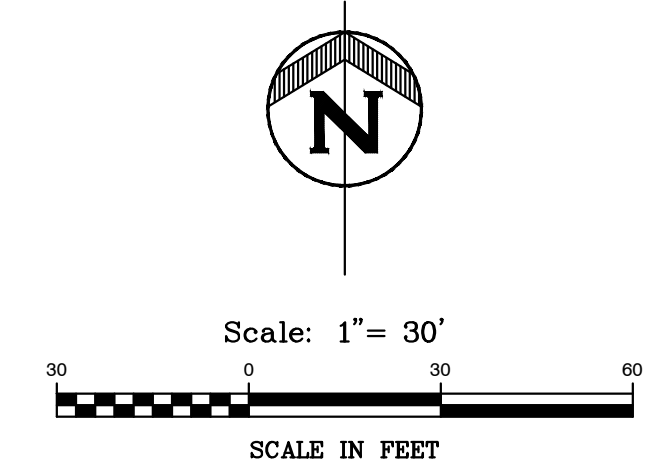
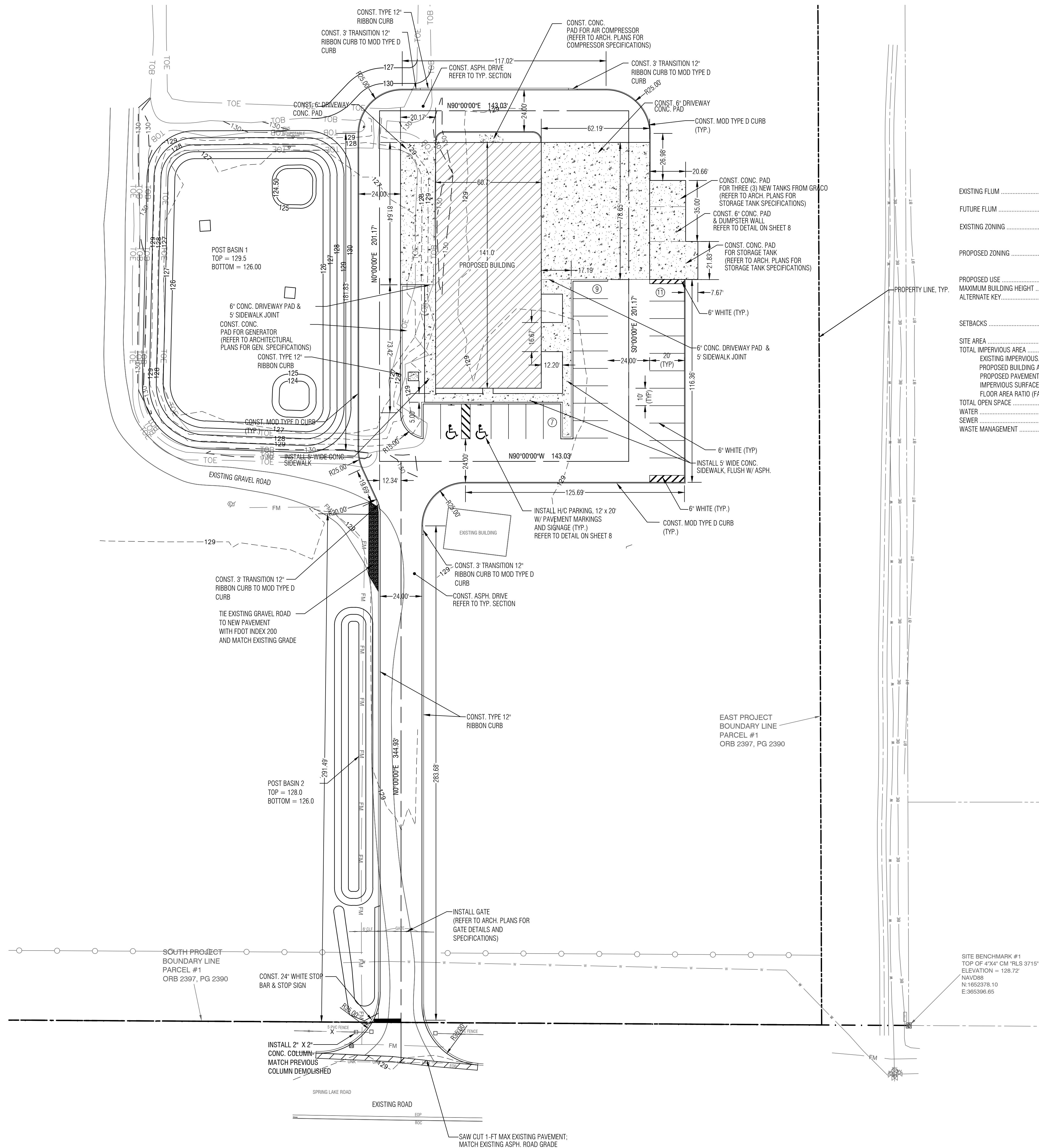
- THE AREA OF THE ENTRANCE SHOULD BE CLEARED OF ALL VEGETATION, ROOTS, AND OTHER OBJECTIONABLE MATERIAL. A GEOTEXTILE SHOULD BE LAID DOWN TO IMPROVE STABILITY AND SIMPLIFY MAINTENANCE. THE GRAVEL SHALL THEN BE PLACED OVER THE GEOTEXTILE TO THE SPECIFIED DIMENSIONS.
- THE ENTRANCE SHALL BE MAINTAINED IN A CONDITION WHICH WILL PREVENT TRACKING OF MUD ONTO PUBLIC ROADS. THIS MAY REQUIRE PERIODIC TOP DRESSING WITH 2-INCH STONE, AS CONDITIONS DEMAND. ALL MATERIALS SPILLED, DROPPED, OR TRACKED FROM VEHICLES ONTO ROADWAYS MUST BE REMOVED IMMEDIATELY. LOOK FOR SIGNS OF TRUCKS AND TRAILED EQUIPMENT "CUTTING CORNERS" WHERE THE GRAVEL MEETS THE ROADWAY. SWEEP THE PAVED ROAD DAILY FOR SEDIMENTS.

**CITY OF FRUITLAND PARK
METAL BUILDING
DEMOLITION AND
EROSION CONTROL PLAN**

902 North Sinclair Ave.
Taverner, Florida 32778
Office: 352.343.8481
Fax: 352.343.8495
Certificate of Authorization Number: 33380

DATE:	SEPTEMBER 2021
DESIGNED BY:	BJT
DRAWN BY:	JMW
CHECKED BY:	BJT
JOB NO.:	061040.0083
FILE NAME:	061040.0083_001.dwg
Sheet 03	

BRETT J. TOBIAS, PE
Registered Eng 69017



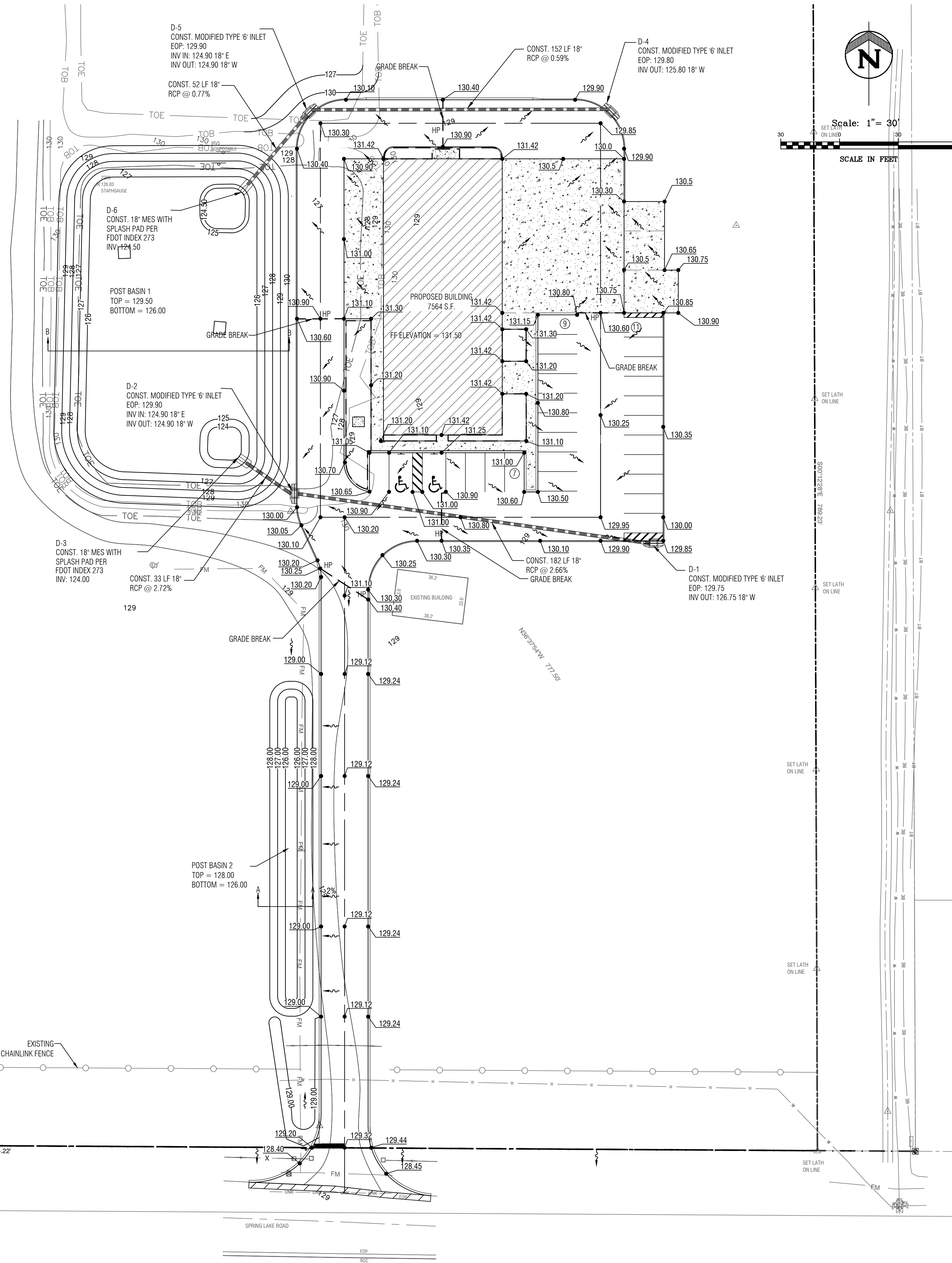
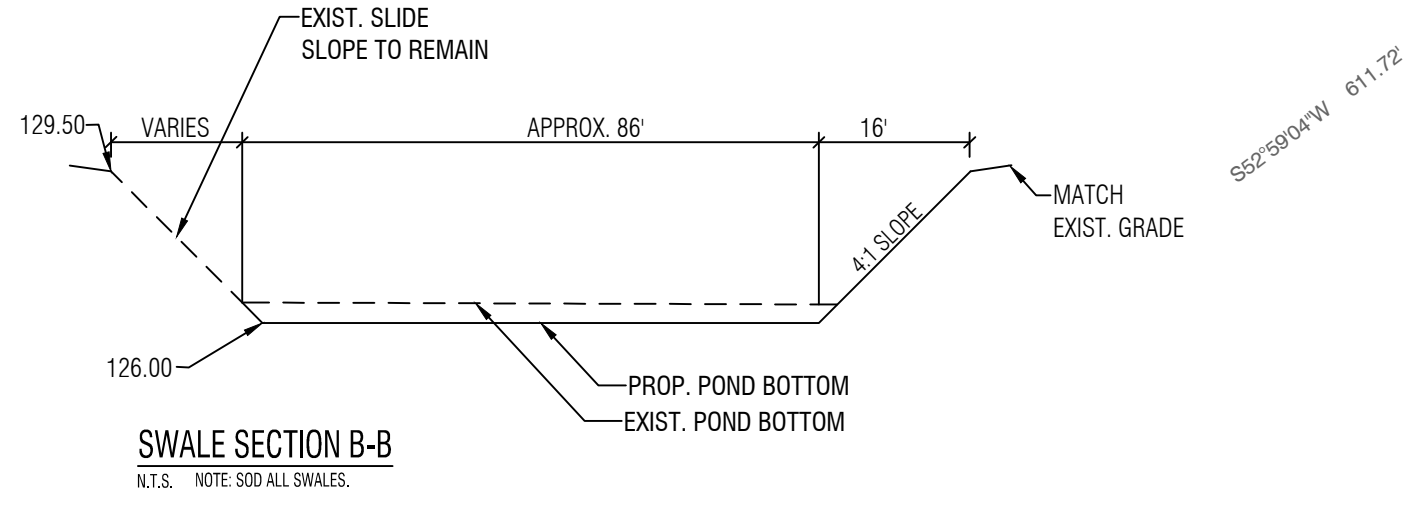
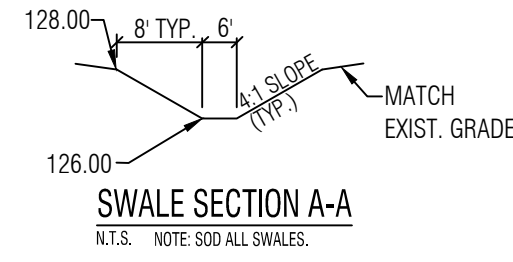
SITE DATA

EXISTING FLUM	INSTITUTIONAL, MIXED COMMUNITY, RECREATIONAL
FUTURE FLUM	INSTITUTIONAL, MIXED COMMUNITY, RECREATIONAL
EXISTING ZONING	IMPROVED GOVT MUNICIPAL (6900) R-P (RESIDENTIAL-PROFESSIONAL)
PROPOSED ZONING	PPD (PUBLIC FACILITY DISTRICT) R-P (RESIDENTIAL-PROFESSIONAL) RECREATIONAL
PROPOSED USE	GOVT MUNICIPAL BUILDING
MAXIMUM BUILDING HEIGHT	35'
ALTERNATE KEY	1284201
SETBACKS	30' FRONT 15' SIDES & REAR
SITE AREA	17.82 ACRES
TOTAL IMPERVIOUS AREA	52,358 SF (1.17 ac)
EXISTING IMPERVIOUS	4,364 SF (0.10 ac)
PROPOSED BUILDING AREA	8,534 SF (0.20 ac)
PROPOSED PAVEMENT/CONC. AREA	39,460 SF (0.91 ac)
IMPERVIOUS SURFACE RATIO (ISR)	52,358 SF (6.74%)
FLOOR AREA RATIO (FAR)	1.03% (0.19 ac/17.82 ac)
TOTAL OPEN SPACE	16.64 AC (93.39%)
WATER	CITY OF FRUITLAND PARK
SEWER	CITY OF FRUITLAND PARK
WASTE MANAGEMENT	PROPOSED DUMPSTER

**CITY OF FRUITLAND PARK
METAL BUILDING
GEOMETRY PLAN**



DATE:	SEPTEMBER 2021
DESIGNED BY:	BJT
DRAWN BY:	JMW
CHECKED BY:	BJT
JOB NO.:	061040.0083
FILE NAME:	161040.0083.dwg
Sheet 04	



REVISION	DATE
1	
2	
3	
4	
5	
6	
7	
8	

**CITY OF FRUITLAND PARK
METAL BUILDING
DRAINAGE & GRADING PLAN**

HALFF
902 North Sinclair Ave.
Tavares, Florida 32778
Office: 352.343.8481
Fax: 352.343.8495
Certificate of Authorization Number: 33380

DATE:	SEPTEMBER 2021
DESIGNED BY:	BJT
DRAWN BY:	JMW
CHECKED BY:	BJT
JOB NO.:	081040.0083
FILE NAME:	081040.DWG

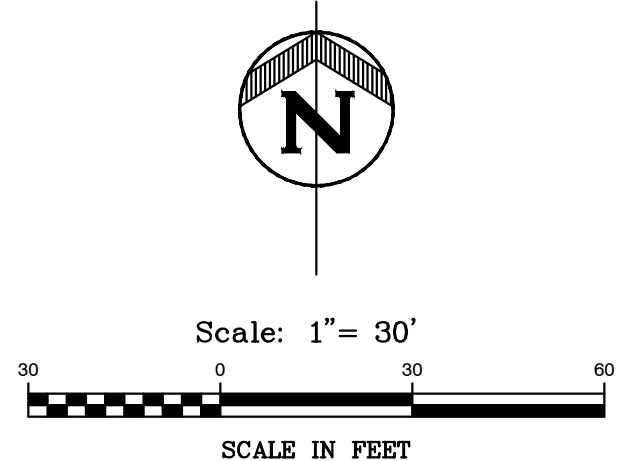
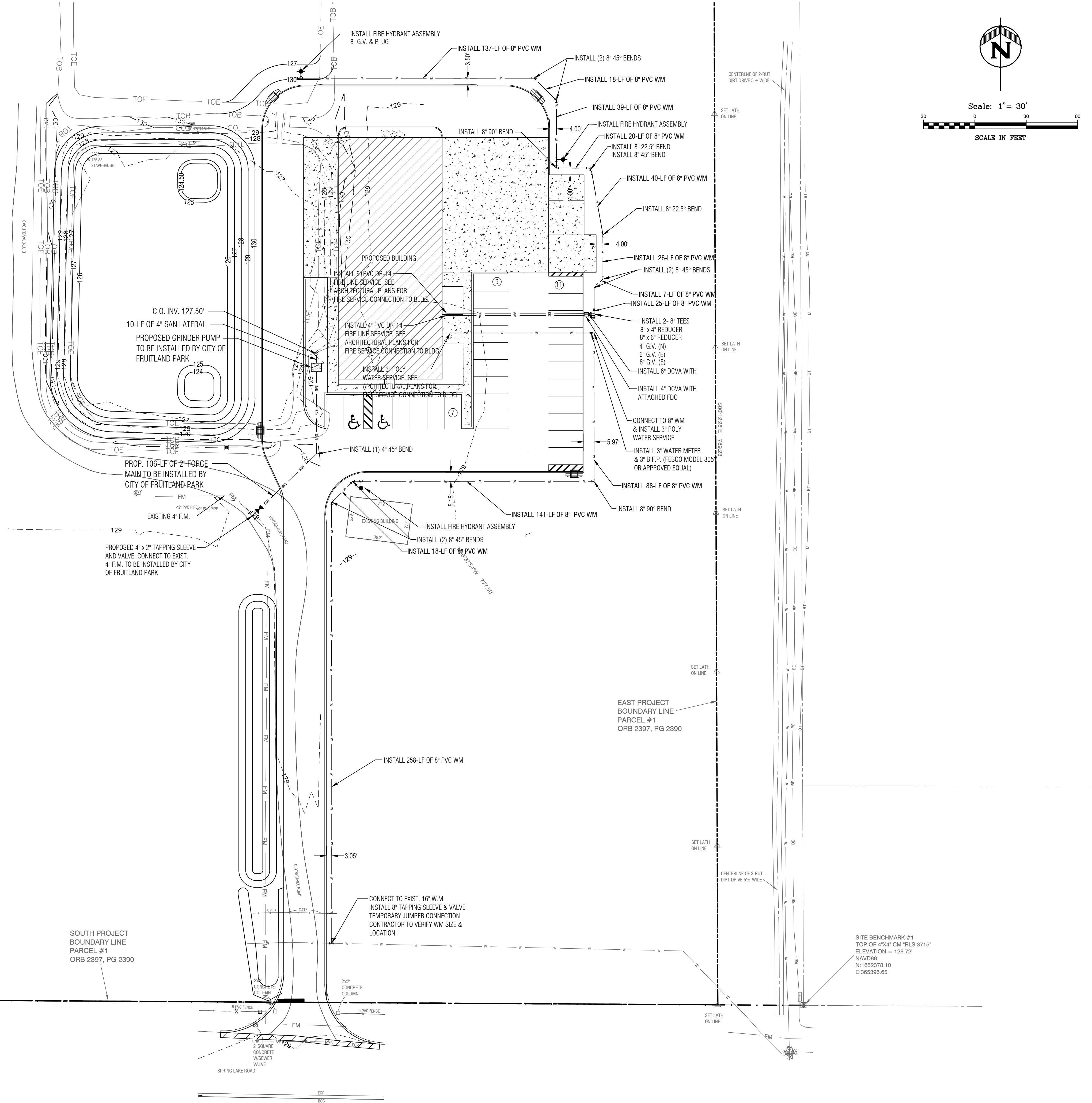
Sheet 05

BRETT J. TOBIAS, PE
Registered Eng 69017

LEGEND	
	SAN SANITARY SEWER PIPE
	WATER MAIN
	GATE VALVE
	REDUCER
	TEE
	ELBOW
	BLOW-OFF
	FIRE HYDRANT
	U.E. UTILITY EASEMENT
	SINGLE WATER SERVICE
	BT BACTERIOLOGICAL SAMPLE POINT

GENERAL WATER NOTES

1. WATER SYSTEM SHALL BE INSTALLED IN STRICT ACCORDANCE WITH ALL LOCAL CODES AND REGULATIONS, CLEANED, DISINFECTED AND BACTERIOLOGICALLY CLEARED FOR SERVICE IN ACCORDANCE WITH THE LATEST AWWA STANDARDS AND CHAPTER 62-555 FLORIDA ADMINISTRATIVE CODE.
2. ALL PIPING SHALL BEAR THE "NSF" SEAL FOR POTABLE WATER.
3. WATER MAINS SHALL BE PVC CONFORMING TO AWWA C-900, DR 18 FOR PIPE SIZES 4"-12". PIPES 14" OR LARGER SHALL BE AWWA C-905, DR 18. ALL COUPLINGS COMPOUNDS, SOLVENTS, LUBRICANTS AND PIPE PREPARATION, FOR LAYING, SHALL BE IN ACCORDANCE WITH THE PIPE MANUFACTURERS LATEST RECOMMENDATIONS.
4. DEPTH OF WATER LINES TO BE MINIMUM 36" BELOW FINISHED GRADE.
5. WATER MAINS TO BE LOCATED 5' FROM BACK OF CURB OR EDGE OF PAVEMENT UNLESS OTHERWISE NOTED.
6. ALL PIPING CLEARANCES SHALL BE IN ACCORDANCE WITH CHAPTER 62-555.314, F.A.C., AND APPROVED BY THE CITY.
7. ALL WATER MAINS UNDER PAVEMENT SHALL BE DUCTILE IRON AND SHALL EXTEND 5' BEYOND THE BACK OF CURB, OR DIRECTIONAL BORES, WHICH SHALL BE SDR-11 HDPE.
8. ALL SLEEVES UNDER PAVEMENT SHALL EXTEND 5' BEYOND THE BACK OF CURB.



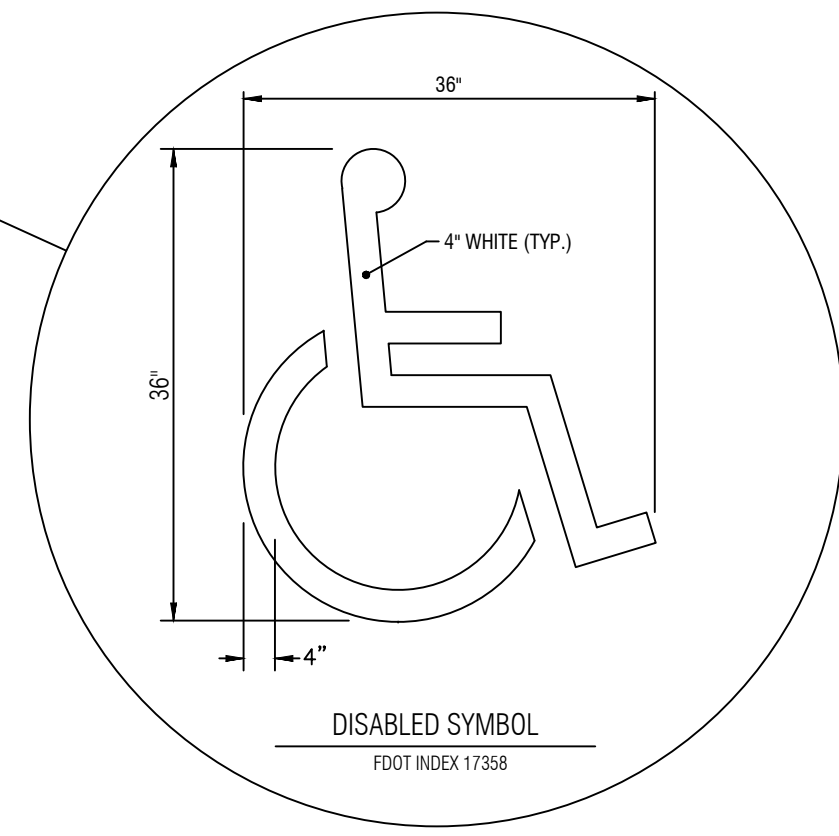
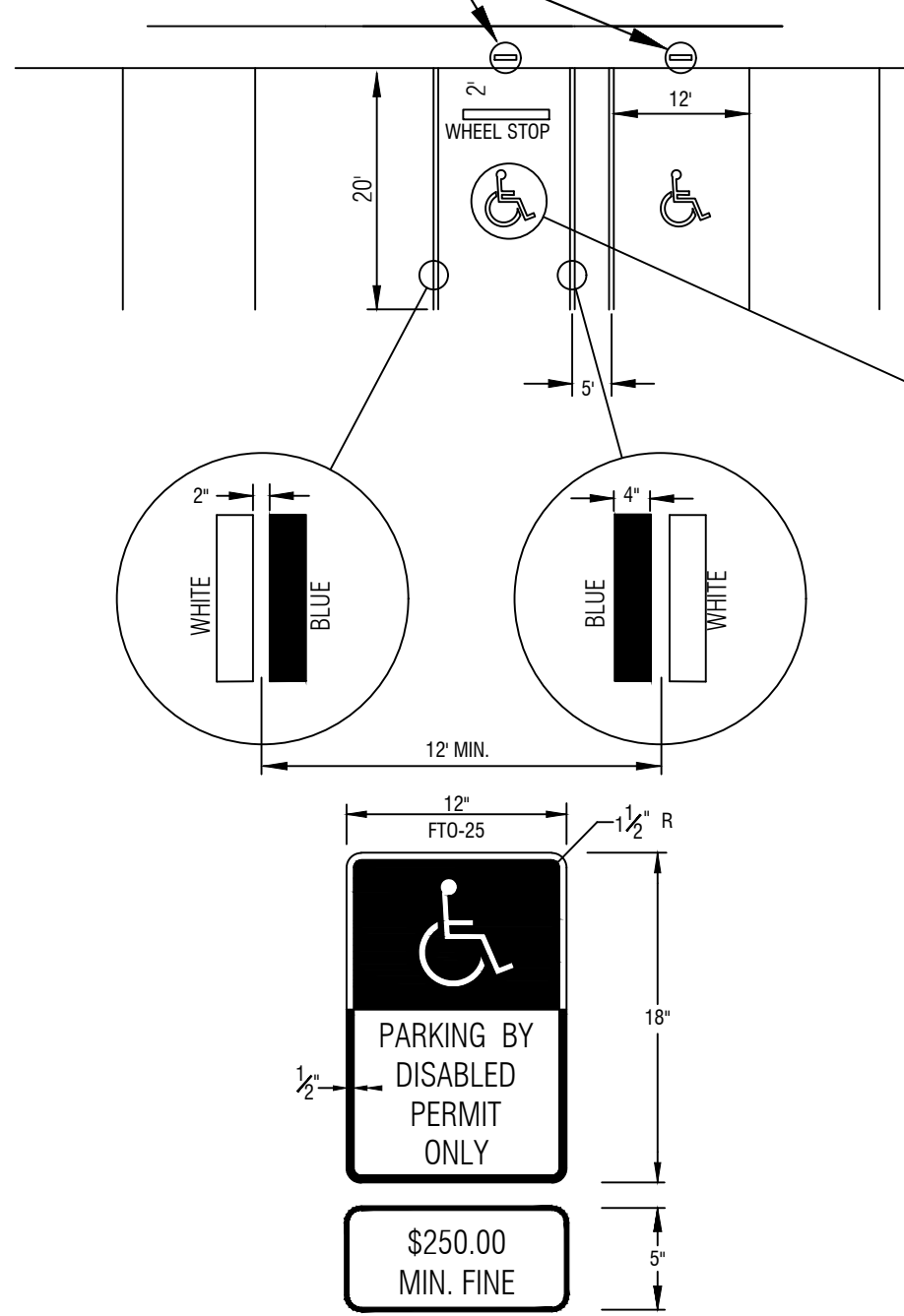
**CITY OF FRUITLAND PARK
METAL BUILDING
UTILITY PLAN**

DATE:	SEPTEMBER 2021
DESIGNED BY:	BJT
DRAWN BY:	JMW
CHECKED BY:	BJT
JOB NO.:	061040.0083
FILE NAME:	061040.0083.dwg

Sheet 06

BRETT J. TOBIAS, PE
Registered Eng 69017

SEE DETAIL DT1002 FOR RESERVED PARKING SIGNAGE SPECIFICATIONS

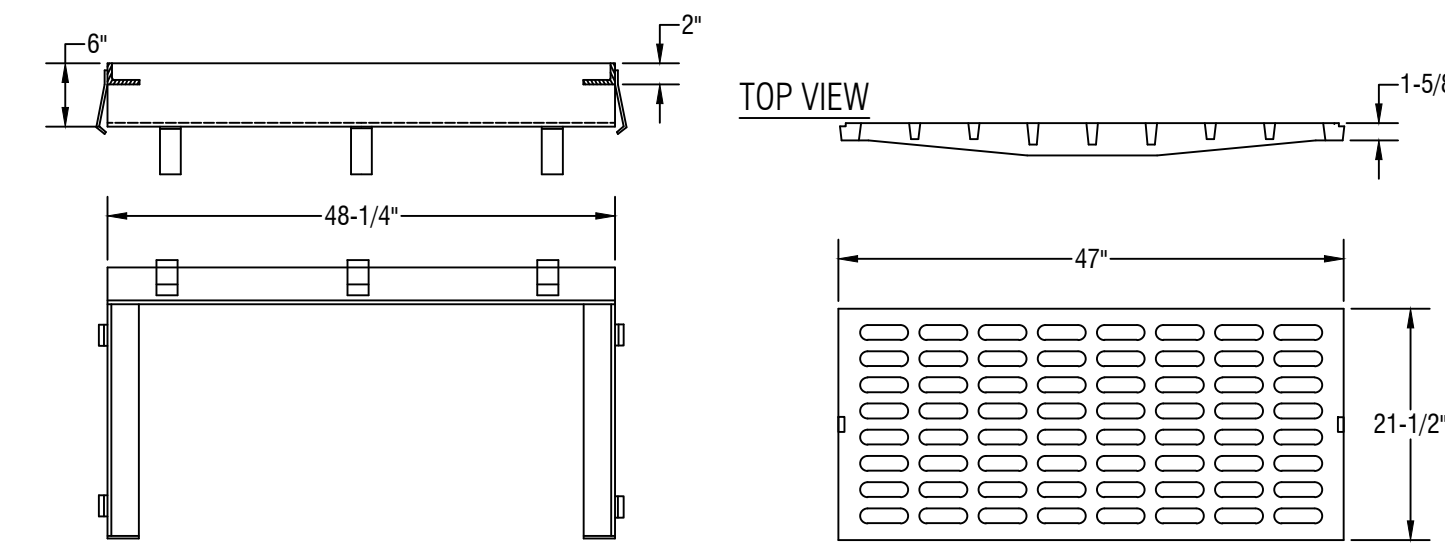
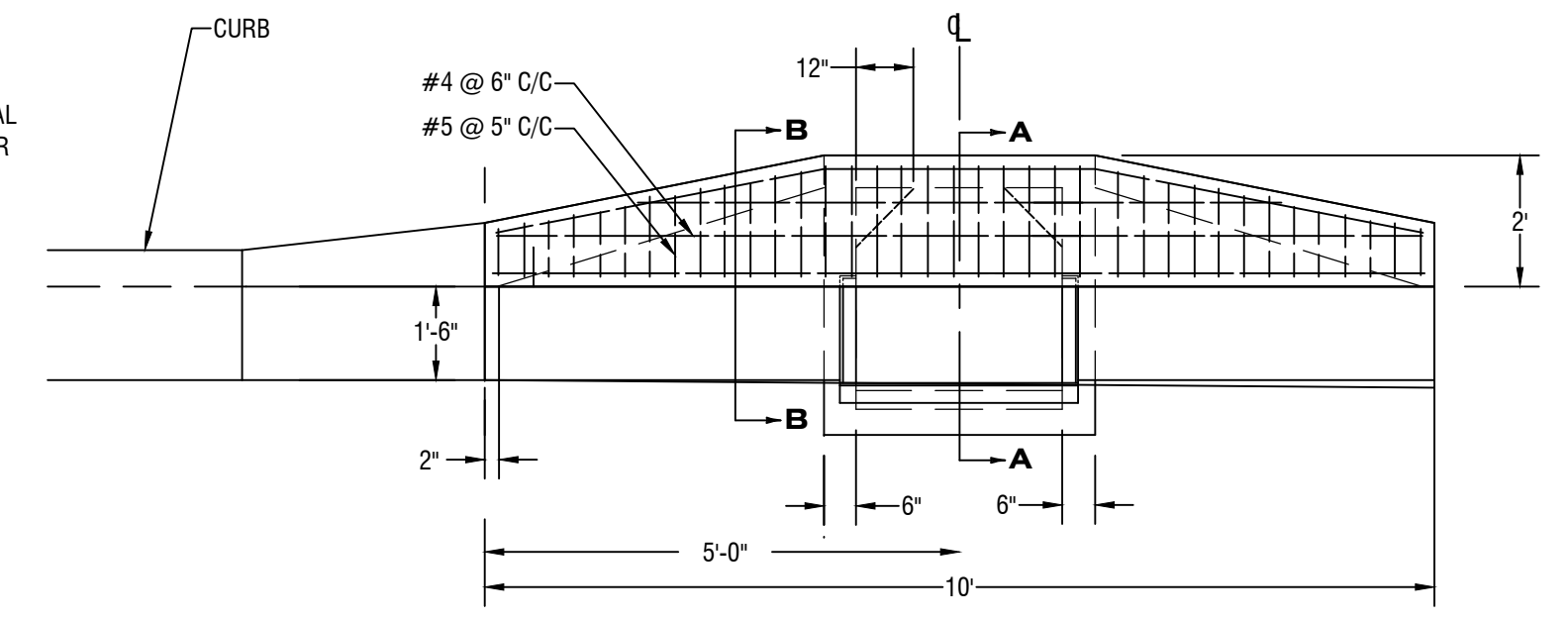
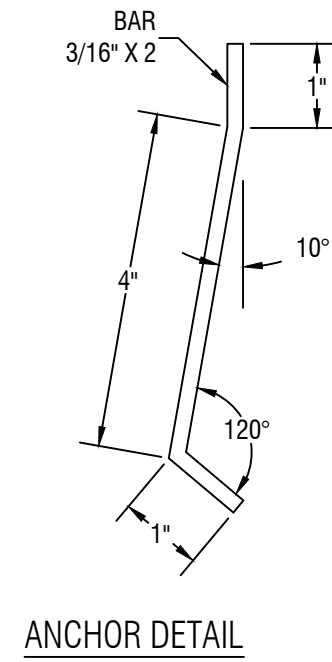
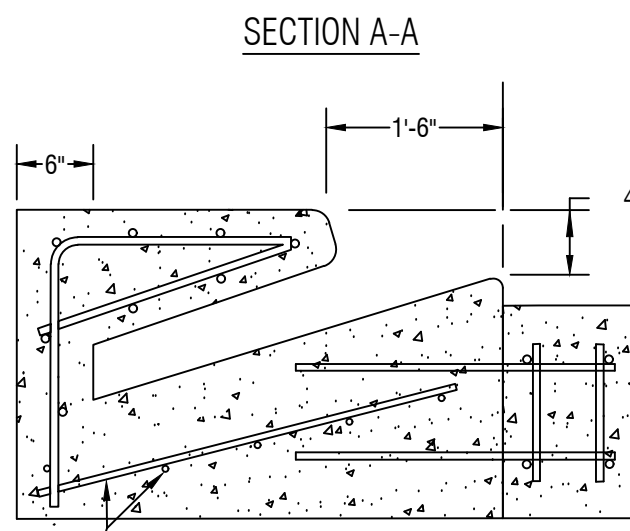
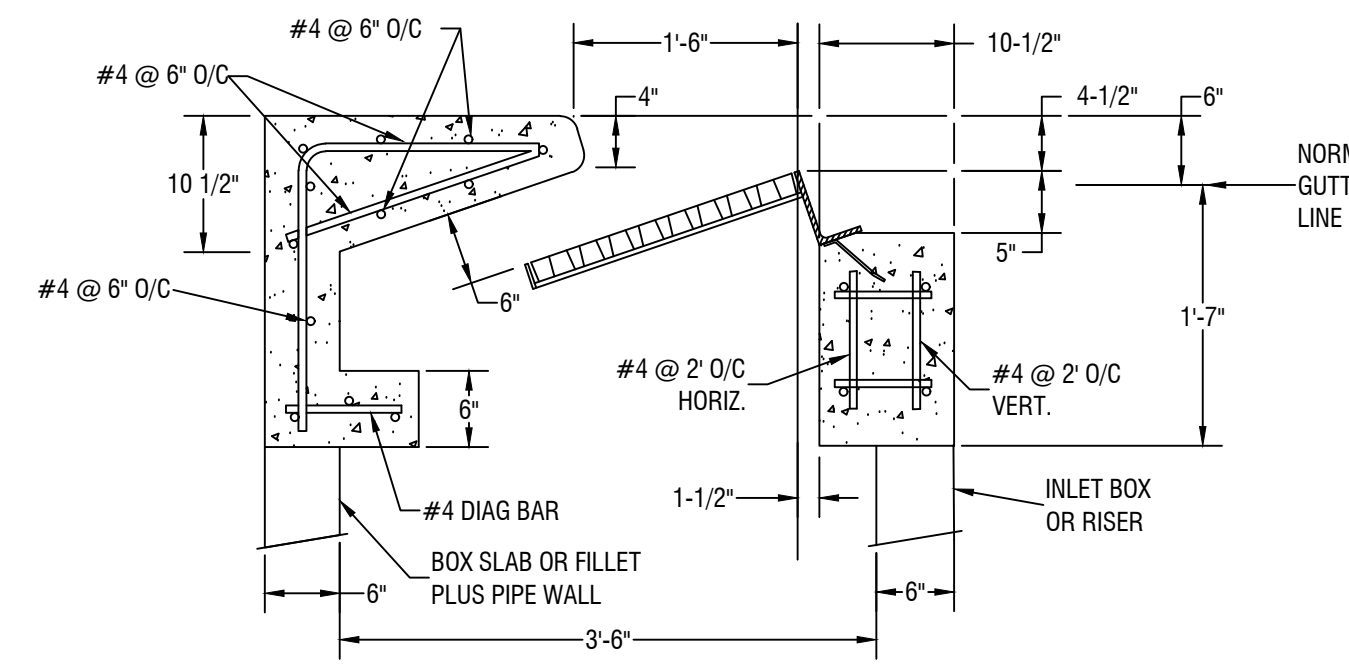


NOTES:

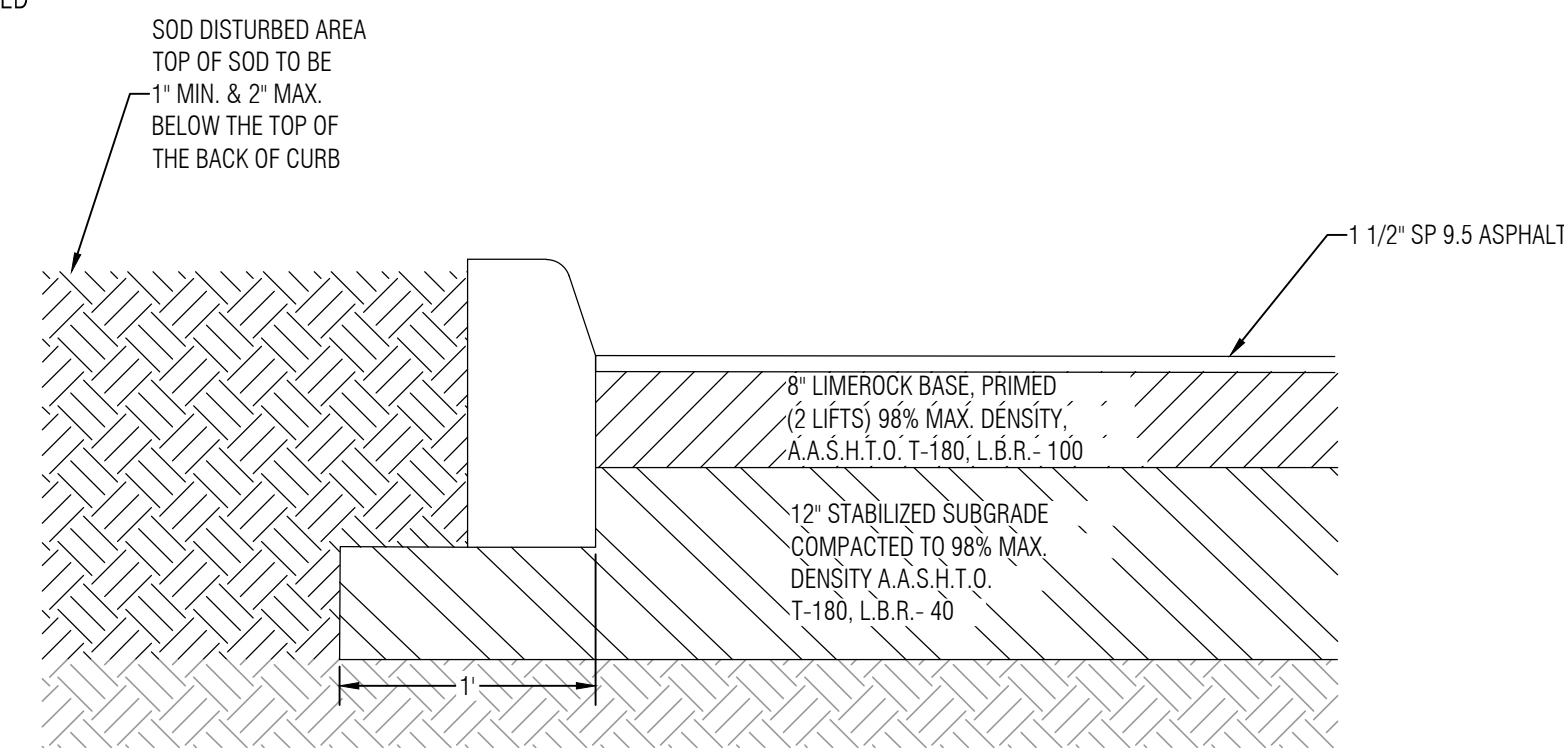
1. EACH SUCH PARKING SPACE SHALL BE CONSPICUOUSLY OUTLINED IN BLUE PAINT, AND SHALL BE POSTED AND MAINTAINED OUTLINED IN BLUE PAINT, AND SHALL BE POSTED AND MAINTAINED WITH A PERMANENT, ABOVE GRADE SIGN BEARING THE INTERNATIONAL SYMBOL OF ACCESSIBILITY, OR THE CAPTION "PARKING BY DISABLED PERMIT ONLY," OR BEARING BOTH SUCH SYMBOL AND CAPTION. SUCH SIGNS SHALL NOT BE OBTURED BY A VEHICLE PARKED IN THE SPACE. ALL HANDICAPPED PARKING SPACES MUST BE SIGNED AND MARKED IN ACCORDANCE WITH THE STANDARDS ADOPTED SIGNED AND MARKED IN ACCORDANCE WITH THE STANDARDS ADOPTED BY THE DEPARTMENT OF TRANSPORTATION. THE CITY OF TAVARES DISCOURAGES VARIATIONS FROM THE STANDARD.
2. FL DOT RECOMMENDS MEASURING PARKING SPACE WIDTH FROM CENTER TO CENTER BETWEEN BLUE AND WHITE STRIPES.

NOTE: (HANDICAP SIGN ONLY)

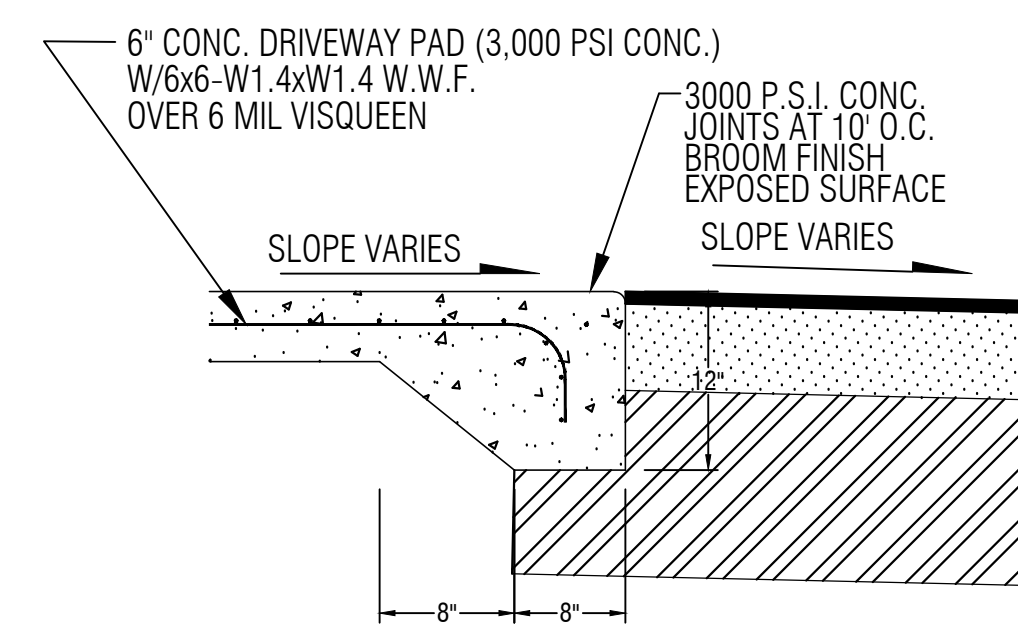
1. ALL LETTERS SHALL BE BLACK AND 1" IN HEIGHT. LETTERS ARE TO BE SERIES "B" OR "C", PER MUTCD.
2. TOP PORTION OF SIGN SHALL HAVE REFLECTORIZED (ENGINEERING GRADE) BLUE BACKGROUND WITH WHITE REFLECTORIZED LEGEND AND BORDER.
3. BOTTOM PORTION OF SIGN SHALL HAVE A REFLECTORIZED (ENGINEERING GRADE) WHITE BACKGROUND WITH BLACK BORDER.
4. ONE SIGN REQUIRED FOR EACH PARKING SPACE.
5. HEIGHT OF SIGN SHALL BE IN ACCORDANCE WITH SECTION 24-23 OF THE MANUAL ON UNIFORMED TRAFFIC CONTROL DEVICES (MUTCD)



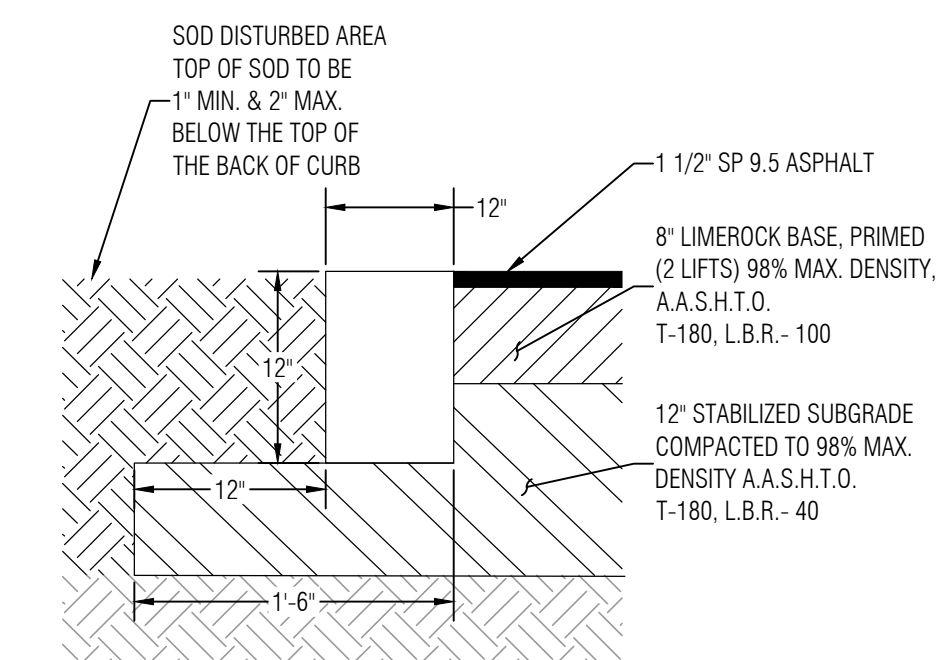
FDOT TYPE 6 CURB INLET (MODIFIED)
ALL STRUCTURAL SPECIFICATIONS SHALL MEET OR EXCEED F.D.O.T. INDEX NO. 211



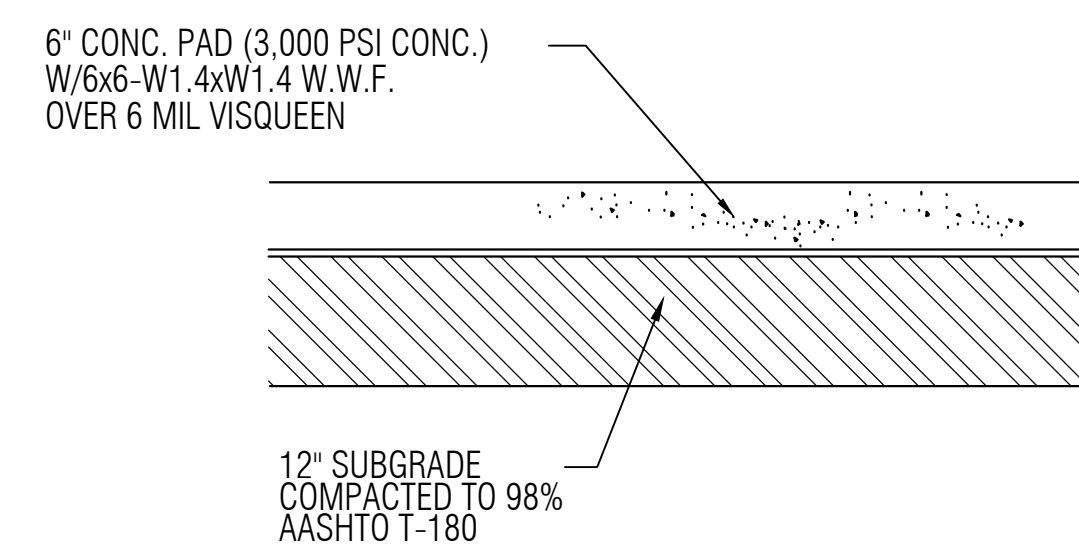
TYPICAL PAVING DETAIL
NOT TO SCALE



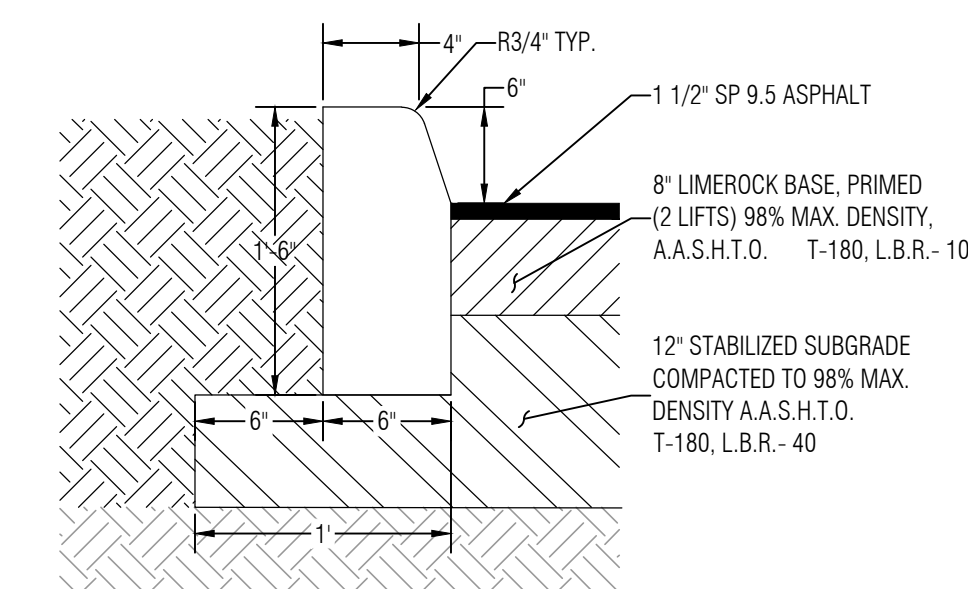
FLUSH CONC. SECTION
NOT TO SCALE



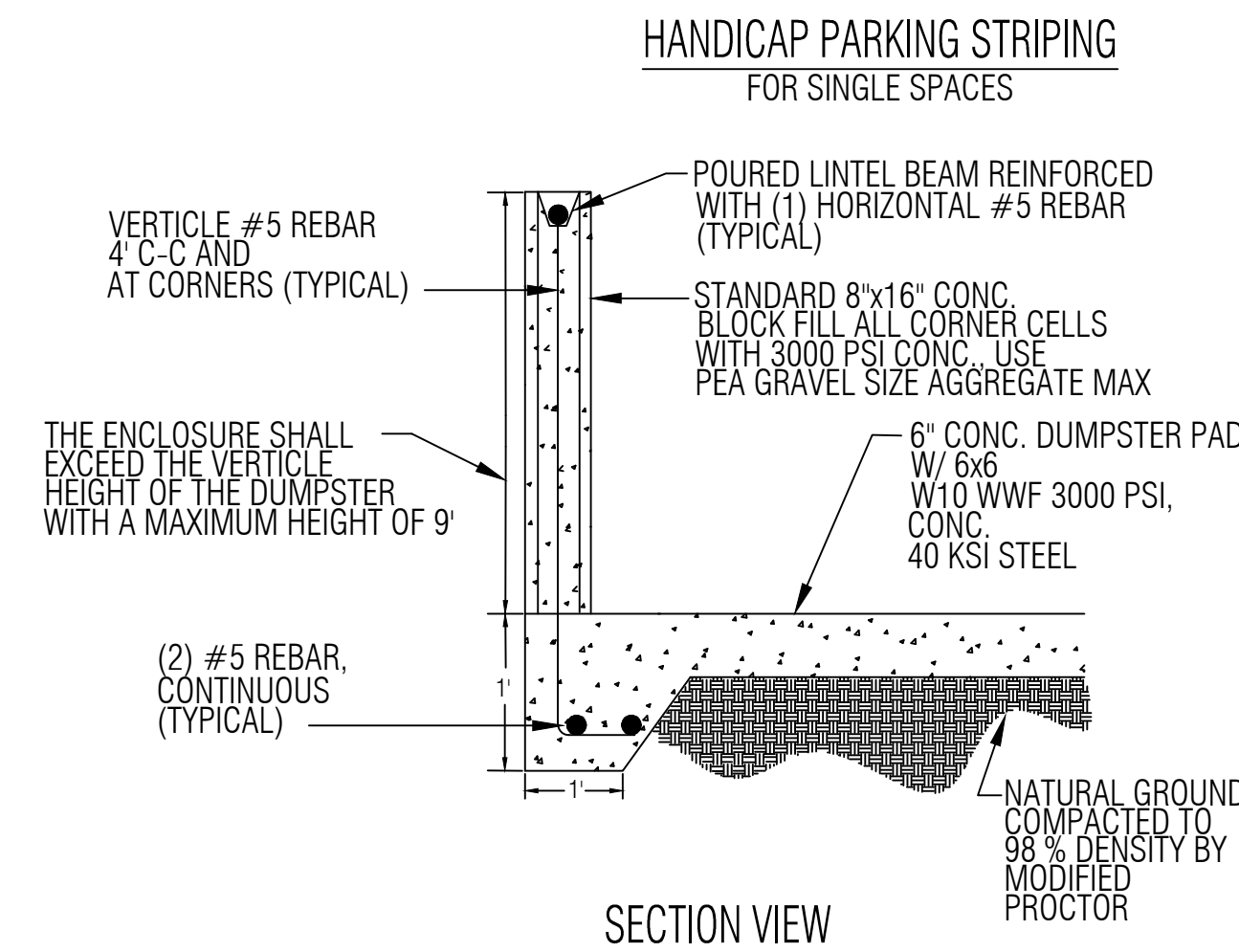
6" RIBBON CURB DETAIL
NOT TO SCALE



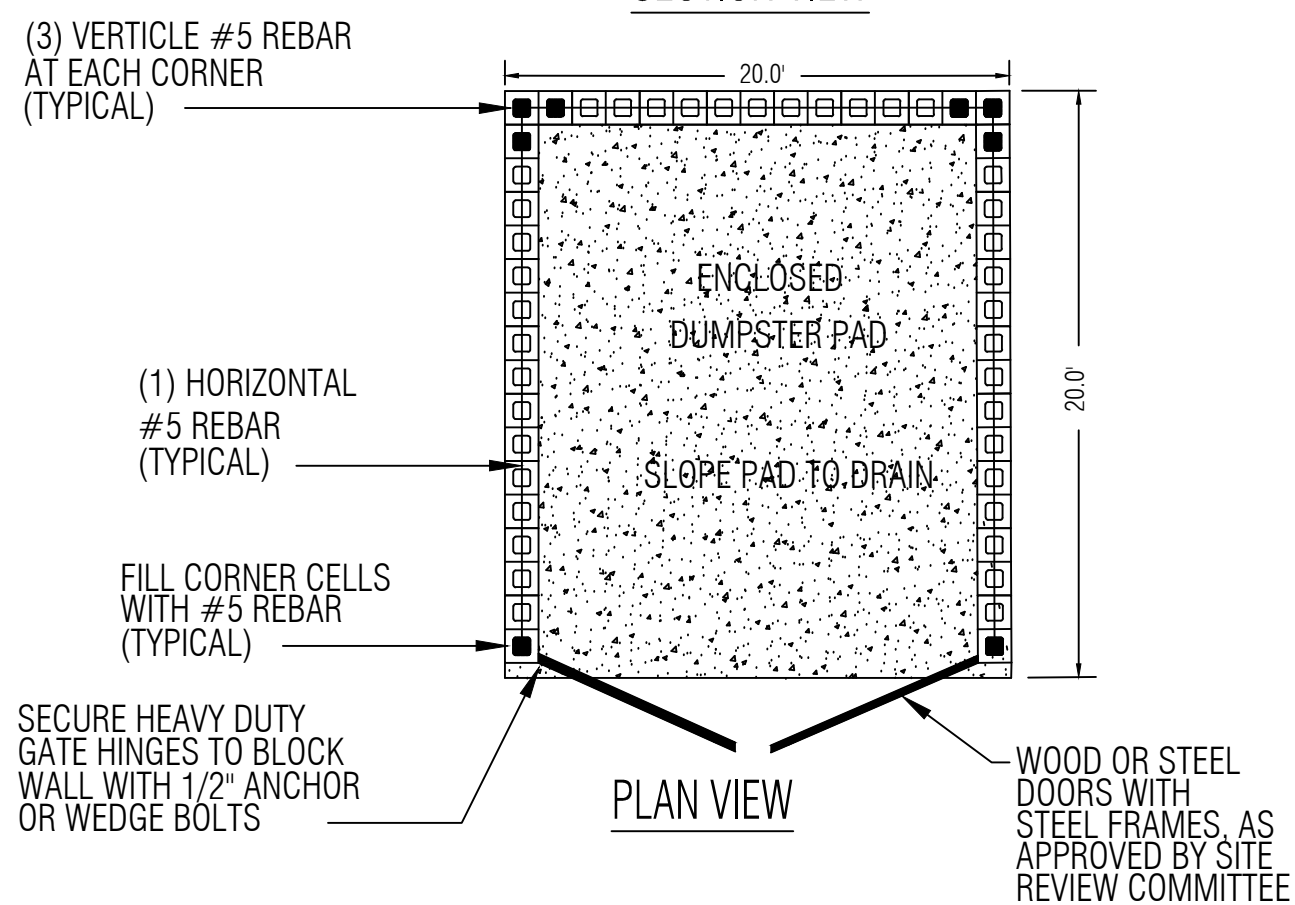
6" CONC. DRIVEWAY PAD
NOT TO SCALE



6" MODIFIED TYPE 'D' CURB
NOT TO SCALE



SECTION VIEW



DUMPSTER DETAIL
NOT TO SCALE

HANDICAP PARKING STRIPING FOR SINGLE SPACES

REVISION	DATE

**CITY OF FRUITLAND PARK
METAL BUILDING**

DETAIL SHEET

HALFF
902 North Sinclair Ave.
Tavares, Florida 32778
Office: 352.343.8481
Fax: 352.343.8495
Certificate of Authorization Number: 33380

DATE:	SEPTEMBER 2021
DESIGNED BY:	BJT
DRAWN BY:	JMW
CHECKED BY:	BJT
JOB NO.:	081040.0083
FILE NAME:	181040.DWG

Sheet 08